

MONICA

Pattern from [Meeli](#)
Translation help by [Mercar](#)
Selling this pattern is forbidden without
written permission from the author.

MONICA

Yarn: 100g / ~800 m; your choice of lace yarn

Circular needles: 3,0-4,0 mm; depends on gauge of the knitter

*I used Linate Smyrna Platinum (100g / 750 m) and needles 3,5 mm for knitting, and my first attempt needed 90 g of yarn. The measures of the finished shawl were 170cm * 83 cm.*

I must admit that the first shawl I knitted to find mistakes in the pattern. After finishing first shawl I made corrections in pattern, so I'm sure that now I need more yarn.

Abbreviations of stitches I used in charts:

l – knit (k)

○ – yarn over (yo)

∨ – increase 2 stitches from one stitch (knit front and back of the same stitch)

λ – slip first stitch knit wise to right-hand needle, knit next stitch, then pass slipped stitch over knit stitch to left-hand needle (instead of it you may do ssk)

∧ – knit 2 stitches together (k2tog)

λ – slip one stitch knit wise, k2tog, pass slipped stitch over k2tog stitches (sk2p)

3/3 – knit 3 stitches together and increase 3 stitches from them– knit stitches alternatively with yarn over

⊙ – nupp

U – knitting cast on

■ – no stitch

ℵ – knit 2 stitches together from the back loop

∩ – slip stitch to right-hand needle, yarn in front, without knitting it (sl1pw)

⋈ – wrapped stitch

⌢ – cast off

| or * (no) – pattern repeat

The WS rows (even numbers) are marked bold in row numbers, also in charts.



CLUE 1

Start

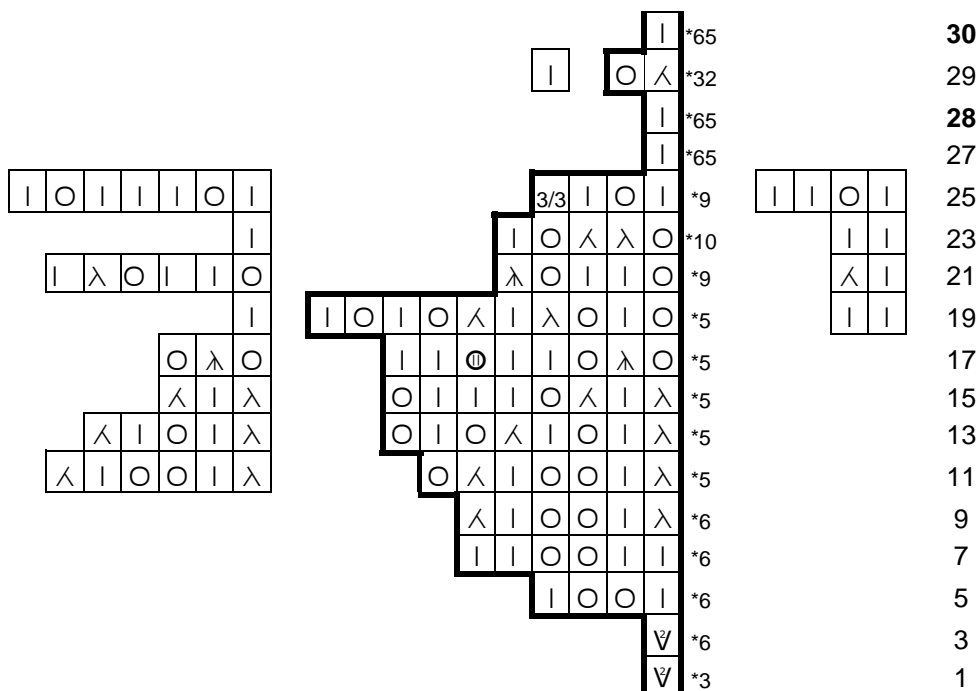
CO 3 sts and k 6 rows. At end of 6th row, do not turn work. Rotate piece 90 degrees clockwise; pick up and k 3 sts (1 st from each garter st ridge) along adjacent edge of piece. Rotate piece again, 90 degrees clockwise; pick up and k 3 sts (1 st in each CO st) along CO edge. You have to get 9 sts on your needle.

Note: The both edge stitches (3+3) are always knit-stitches on RS and WS (unless otherwise stated), where first stitch is slipped purl wise, yarn in front, without knitting. **Those stitches are not drawn in charts.**

All chart sts in WS are purled, unless otherwise stated. Except double YO-s, where first yo is purl stitch and the second yo knit stitch.

Row 0 [WS]: sl 1st st purl wise yarn in front, k2, p3, k3. Start with Chart 1.

Chart 1



Additional notes:

Row 11, 13, 15, 17: sl 1pw, k2; work pattern between black lines 5 times, then knit pattern in the left side; k3.

Row 19, 21, 23, 25: sl1pw, k2; then work 2,2,2,4 sts before the main pattern, then work pattern between black lines 5, 9, 10, 9 times, work st(s) in the left side; k3.

After you completed 30th row you have to have 71 sts on your needles.