

MONICA

CLUE 6

Row 103: s11pw, k2; **next stitch (marked with red) knit front and back – V** (only at first time, at all next times just **k1**), go on with chart 6 (repeat it totally 31 times); k3.

Chart 6 – versions 1 and 2

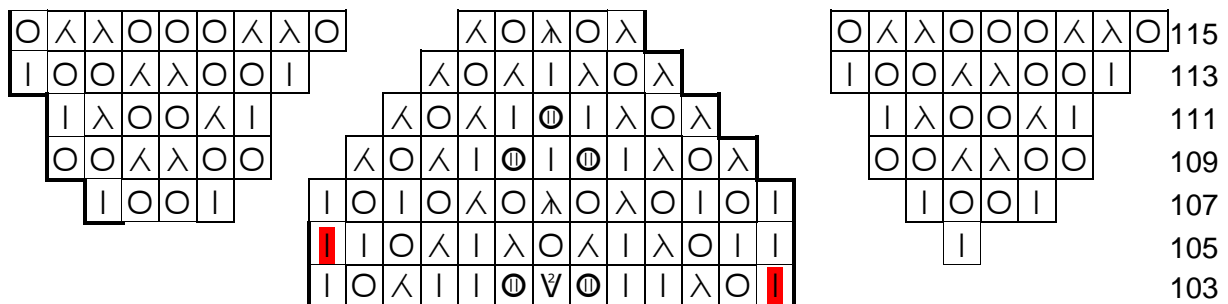
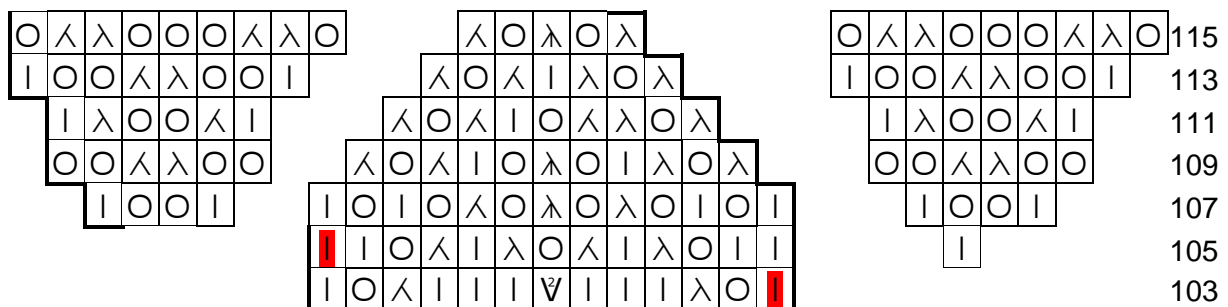


Chart 6 – version 3



Row 105: s11pw, k3; repeat the charted pattern 30 times, knitting **I** as **k1**. On last repeat, the **last stitch** before edge stitches (**marked with red**) **knit front and back – V** (only the last stitch, all other times it is **k1**); k 3.

Go on with chart 6.

At rows 107 - 113 you have double YO-s and work them on **WS** as follows: first yo purl, the second yo knit.

Row 116 (**WS**): s11pw, k to the end of row except the triple YO-s. Work them as follows: k, p, k.

Row 117: make [stretchy](#) cast off, break the yarn and pull through the last stitch.

Soak the shawl in lukewarm water and remove excess water from shawl using a towel. Pin the shawl so that half of the upper edge is a little longer than length of the back. Let it dry. Finally weave the ends.

Thank you for participation! There are no restrictions for improvement the pattern and for sale of finished shawls. I'm glad if you in your presentations link to my [blog](#).